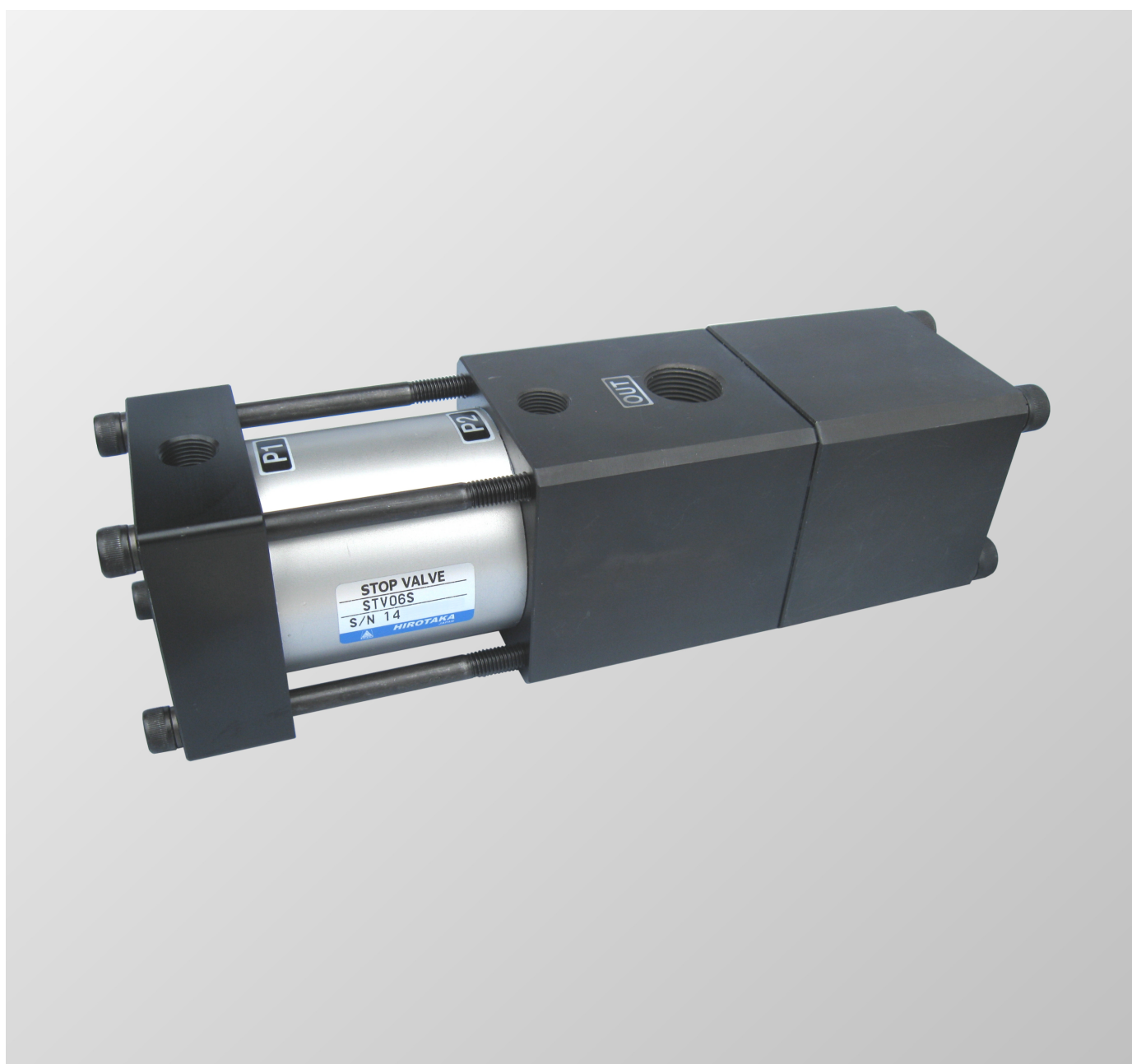




Air-operated hydraulic shut off valve

STOP VALVE

Large capacity, high pressure resistant type hydraulic shut off valve.



HIROTAKA MFG. CO.,LTD.

Overview

The stop valve is an air-operated hydraulic shut off valve.

When used in combination with Pneumatic Booster, it is possible to add "Sudden stop operation" such as emergency stop or inching operation to the high-speed operation of the actuator.

Feature

- ① High-speed control is possible because the large capacity type.
- ② Slim body due to the air-operated type.
- ③ Control can be done with an one pneumatic valve.
- ④ The mounting posture is free.

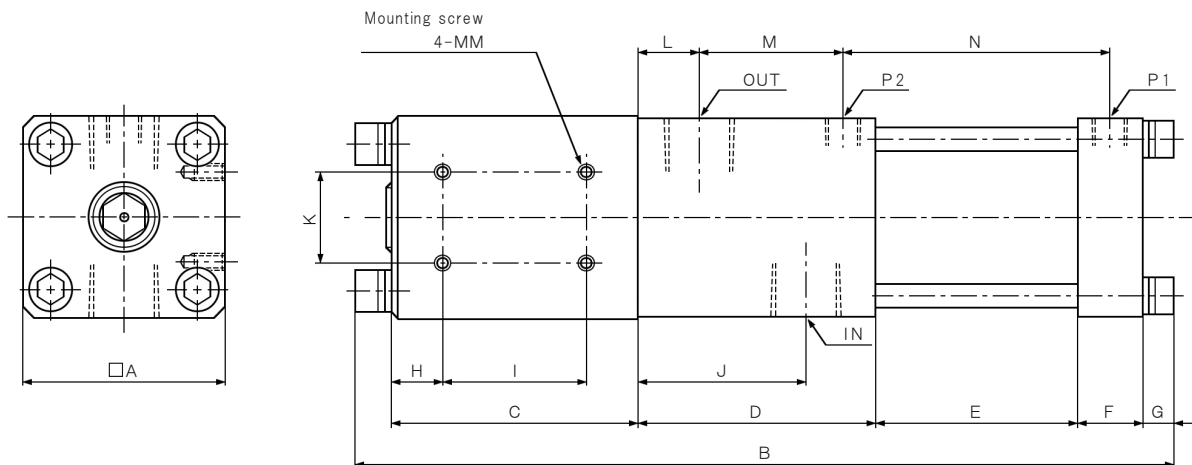
How to order

STV - 06S

Product name	Symbol	Port size
Stop valve	06	Rc3/4
	10	Rc1
	12	Rc1 1/4



Dimension



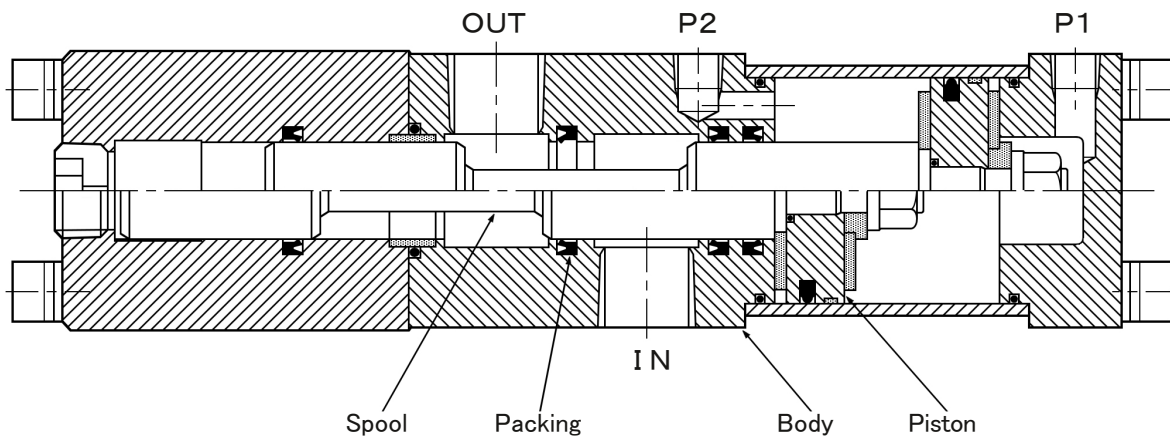
Unit: mm

Model No.	Symbol	A	B	C	D	E	F	G	H	I	J
STV-06S		82	299	82	90	73	32	10	15	52	62
STV-10S		98	398	120	116	98	32	15	25	70	82
STV-12S		118	420	120	133	102	32	15	25	70	96
Model No.	Symbol	K	L	M	N	IN	OUT	P1	P2	MM	
STV-06S		44	26	48	105	3/4	3/4	3/8	3/8	M6x1.0	Depth10
STV-10S		44	30	70	130	1	1	3/8	3/8	M8x1.25	Depth15
STV-12S		52	40	77	134	1 1/4	1 1/4	1/2	1/2	M10x1.5	Depth15

Specification

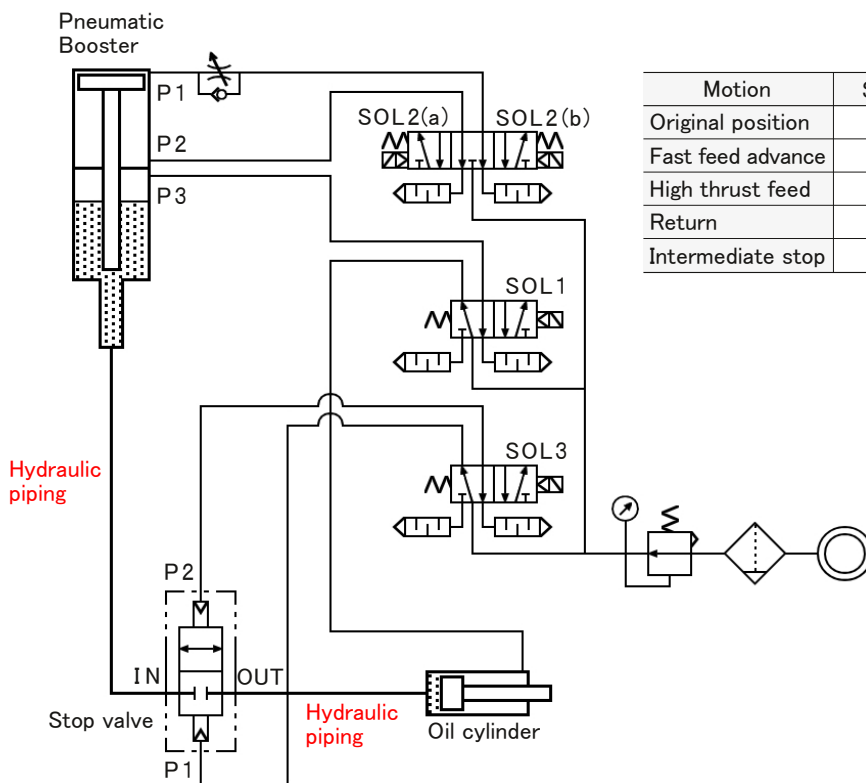
Model	STV-06S	STV-10S	STV-12S
Operating air pressure	0.4 to 0.9MPa		
Operating oil pressure	0 to 21MPa		
Effective sectional area	200mm ²	400mm ²	550mm ²
Seal method	Packing		
Mass	7.8kg	16kg	26kg

Internal construction



Note) Due to the directional nature of the seals used, the hydraulic flow is shut off from the OUT port side.

Piping



Motion	SOL1	SOL2(a)	SOL2(b)	SOL3
Original position	OFF	ON	OFF	OFF
Fast feed advance	ON	ON	OFF	ON
High thrust feed	ON	OFF	ON	ON
Return	OFF	ON	OFF	ON
Intermediate stop	OFF	OFF	OFF	OFF



HIROTAKA MFG. CO.,LTD.

HEAD OFFICE 5-89, Ikoma-cho, Kita-ku, Nagoya City, Aichi 462-0832, JAPAN

Phone +81-52-991-6111 Fax +81-52-991-6115

●LINE UP●

PNEUMATIC POWER CYLINDER

PNEUMATIC BOOSTER

POWER PACK CYLINDER

RUSH BOOSTER

HYDRAULIC CYLINDER

FREE LOCK PAD

SELLOCK CYLINDER

FLOATING CONNECTOR

AUTO CLAMPER

SEL NUT

LINEA BRAKE

PNEUMATIC AND HYDRAULIC

EQUIPMENT