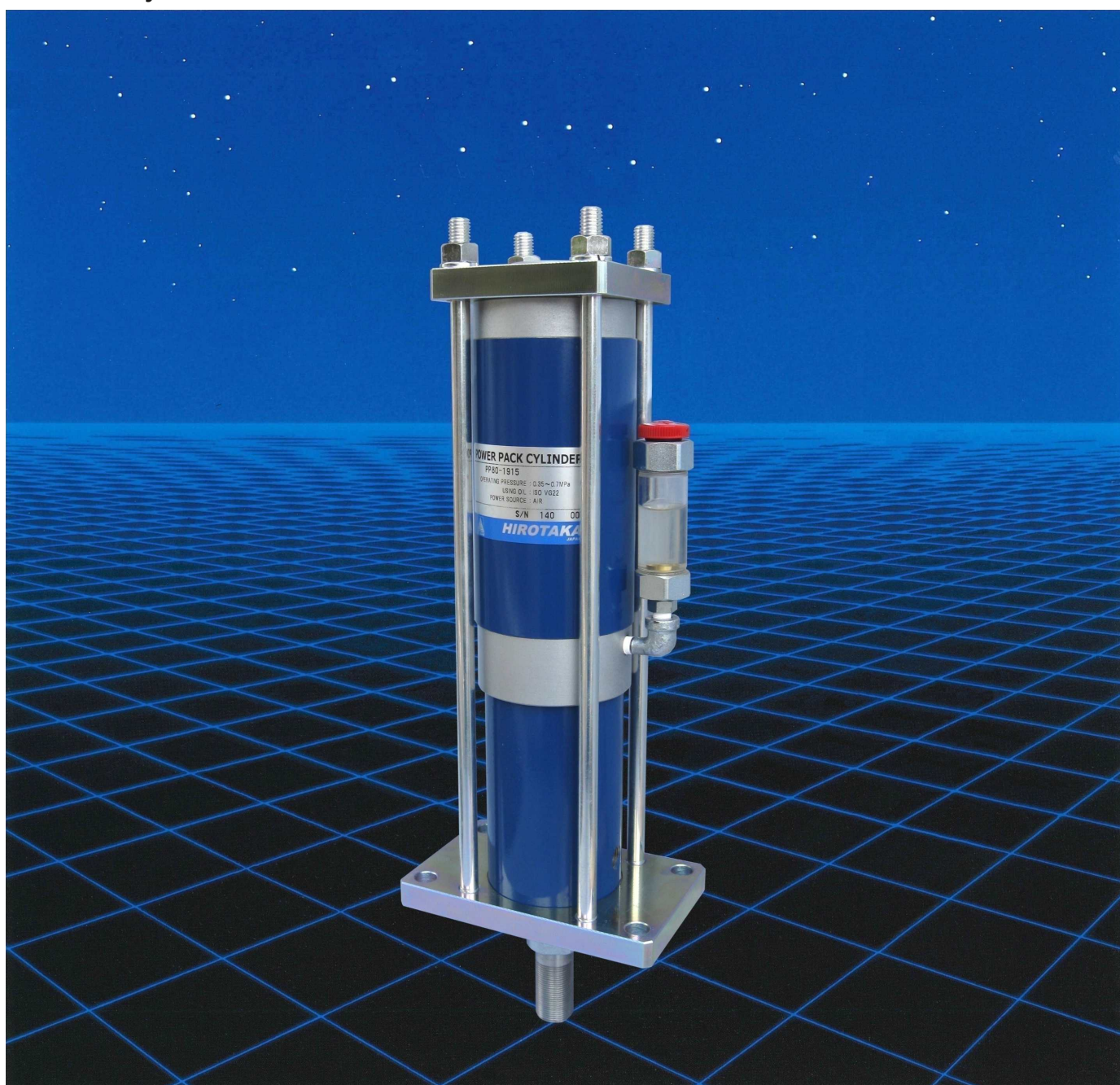




High Thrust Air Cylinder

POWER PACK CYLINDER

Air cylinder that compactly integrates the hydraulic cylinder and the air-hydro booster.



HIROTAKA MFG. CO.,LTD.

How to order

PP 80 - 13 24 - B - G

Example for model number

PP 80 - 1324 - B - G

Bore size: $\phi 80$, Nominal thrust : 1.3 ton, Stroke : 24 mm

Type with oil film removal specification for rod, With oil pressure gauge

Series	
Power Pack Cylinder	

Symbol	Nominal thrust
05	0.5 ton
10	1.0 ton
13	1.3 ton
19	1.9 ton
21	2.1 ton
27	2.7 ton
29	2.9 ton
36	3.6 ton
55	5.5 ton
79	7.9 ton

Symbol	Stroke
05	5 mm
08	8 mm
10	10 mm
14	14 mm
15	15 mm
20	20 mm
24	24 mm
27	27 mm
35	35 mm

Symbol	Oil pressure gauge
Nil	Without pressure gauge
G	With pressure gauge

Symbol	Bore size
50	$\phi 50$
80	$\phi 80$
100	$\phi 100$

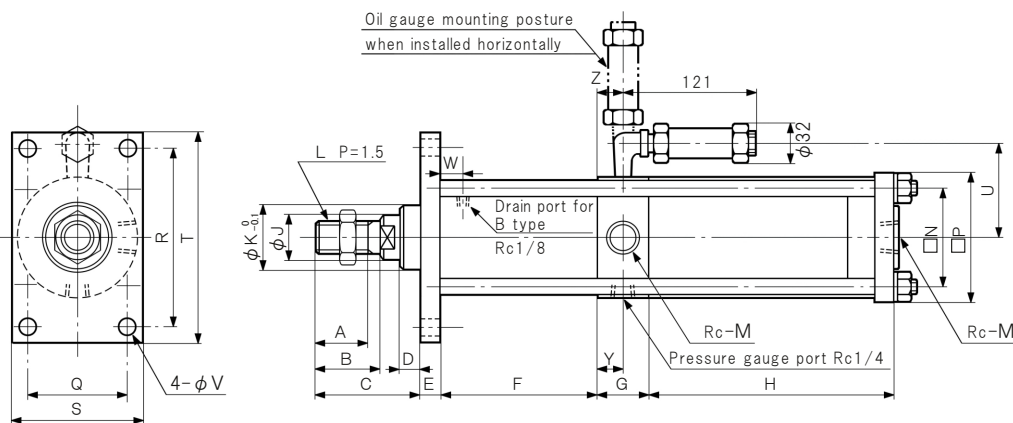
Symbol	Oil film removal specification for rod
Nil	Without measures
B	With measures

Standard model

The following combinations of bore size, nominal thrust, and stroke are standard models.

Bore size	Standard models
$\phi 50$	PP50 - 0510
	- 1005
$\phi 80$	- 1324
	PP80 - 1915
	- 2910
	- 2135
$\phi 100$	- 2727
	PP100 - 3620
	- 5514
	- 7908

Dimension



(Unit: mm)

Rod end nut			
Screw			
Symbol	M20	M24	M30
d	M20	M24	M30
	P1.5	P1.5	P1.5
H	12	14	18
B	30	36	46
C	34.6	41.6	53.1

(Unit: mm)

Model	A	B	C	D	E	F	G	H	J	K	L	M	N	P	Q	R	S	T	U	V	W	Y	Z
PP 50	30	35	55	10	12	71	38	107	$\phi 25$	$\phi 35$	M20	1/4	53	75	53	110	75	135	60	11	18	26	26
PP 80	40	50	80	15	16	120	38	192	$\phi 35$	$\phi 50$	M24	1/2	75	100	75	135	100	160	65	13	22	25	27
PP 100	50	55	95	20	22	139	45	250	$\phi 55$	$\phi 70$	M30	1/2	95	130	90	180	130	220	75	19	30	25	31

Note) PP50 to PP100 are attached a rod end nut.

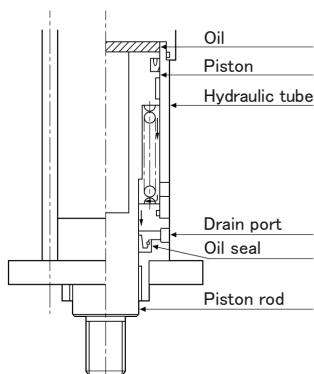
※ Only PP100-7908 has a F value of 137.

Oil film removal specification for rod

The rod oil film removal specification protects parts from oil by minimizing oil discharge discharge from the sliding parts of the piston rod.

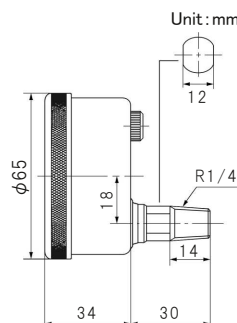
Internal structure

As the piston slides, the oil adhering to the inner surface of the hydraulic tube becomes a thin oil film and exits from the piston rod surface. Before this oil exit, the oil film is removed by the oil seal and discharged from the drain port.



Oil pressure gauge

Model No.	2315-63-25 B
Pressure range	0 to 25 MPa
Accuracy	$\pm 1.6\%$ or less of full scale
Heat resistance temperature	-5 to +45°C
Glycerine filling	This pressure gauge is filled with pure glycerine.
Temperature characteristic	Accuracy change of +0.3% for each +10°C rise based on +20°C, and -0.3% for every -10°C.





HIROTAKA MFG. CO.,LTD.

HEAD OFFICE 5-89, Ikoma-cho, Kita-ku, Nagoya City, Aichi 462-0832, JAPAN

Phone +81-52-991-6111 Fax +81-52-991-6115

●LINE UP●

PNEUMATIC POWER CYLINDER

PNEUMATIC BOOSTER

POWER PACK CYLINDER

RUSH BOOSTER

HYDRAULIC CYLINDER

FREE LOCK PAD

SELLOCK CYLINDER

FLOATING CONNECTOR

AUTO CLAMPER

SEL NUT

LINEA BRAKE

PNEUMATIC AND HYDRAULIC

EQUIPMENT