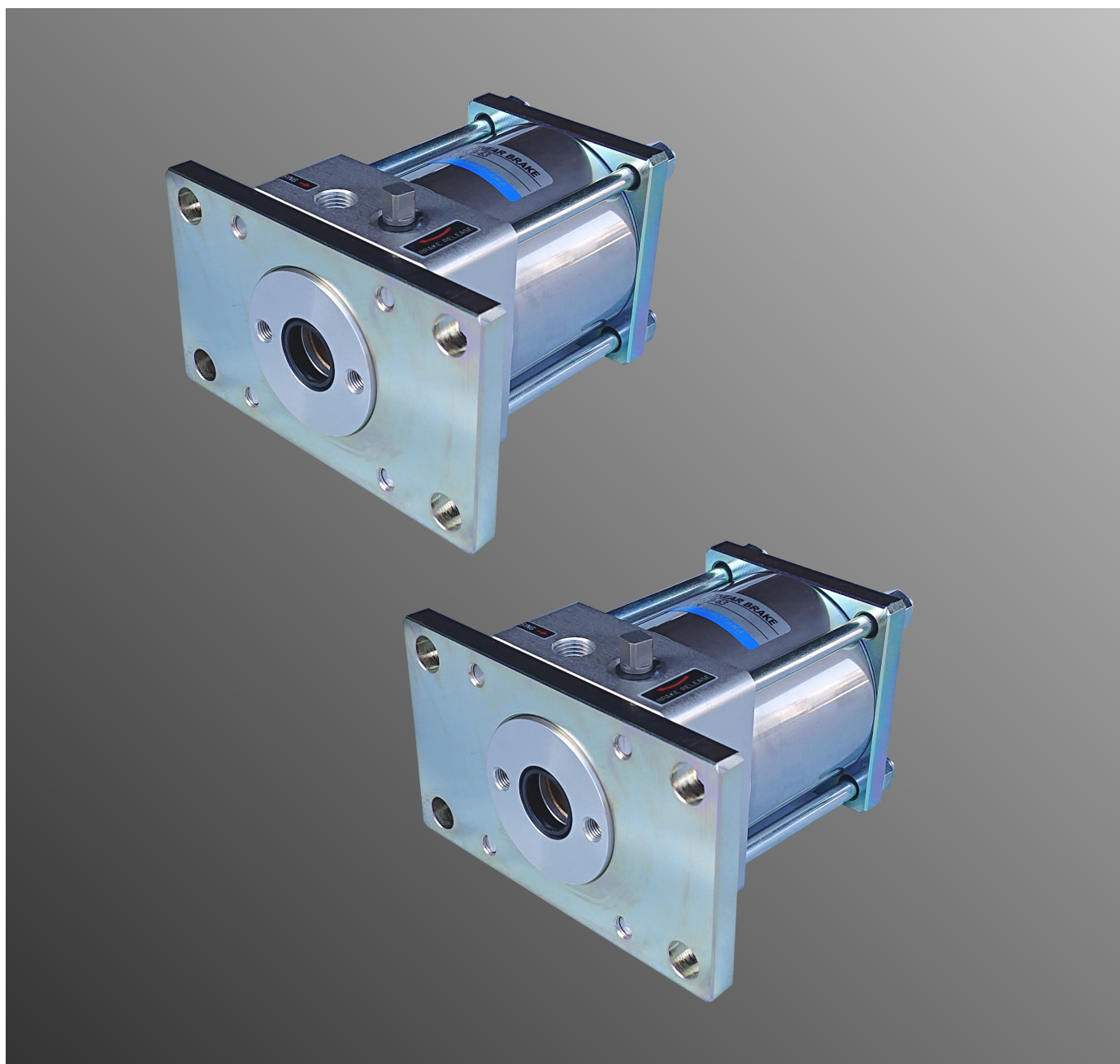




Mechanical lock type brake for linear shaft

LINEAR BRAKE

Reliable control of intermediate stops, emergency stops, drop prevention, and positioning.



HIROTAKA MFG. CO.,LTD.

Can be easily retrofitted to existing equipment.
Braking force is 900 to 9200 N.
Space saving with simple design.

Overview

Space-saving mechanical lock unit that utilizes the braking performance of an air cylinder with brake. (Sellock cylinder).

The brake releases when compressed air is supplied and the brake locks when the compressed air is exhausted.

It is used for transported equipment, self-weight drop prevention, intermediate stop holding, etc.

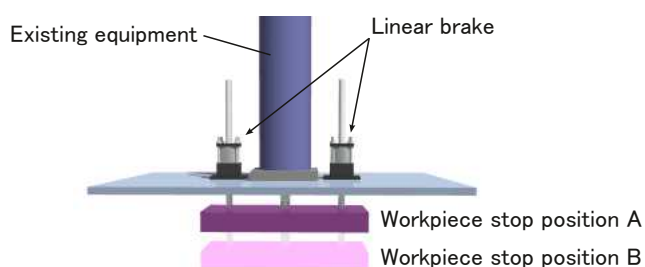
It can also be used as a safety device because it locks when the air pressure supply is interrupted.

Feature

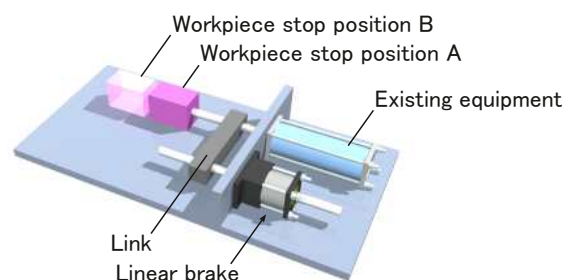
- 1 Mounting position is free. It can be installed in a position away from drive equipment such as cylinders. Installation is easy with a guide shaft that synchronizes with the drive unit.
- 2 Both the brake mechanism and the brake metal have a long service life and excellent reliability.
- 3 Manual release lever is standard equipment.
- 4 Stopping accuracy is ± 1 mm. (Theoretical value at 300mm/sec)
- 5 Space saving due to slim body.

Example of installation

Vertical installation



Horizontal installation



How to order

MRCB - 63

Series
Linea brake

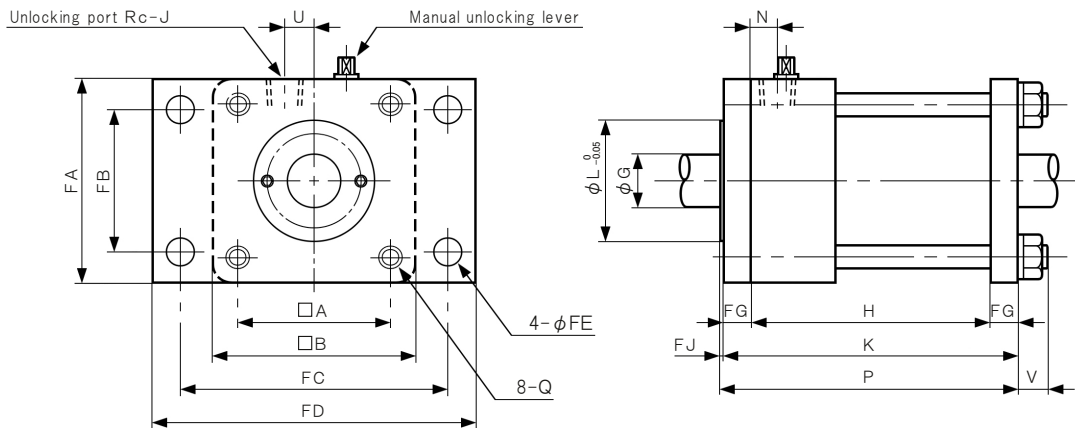
Symbol	Bore size
40	40 mm
50	50 mm
63	63 mm
80	80 mm
100	100 mm
125	125 mm

Specification

Fluid	Air
Operating pressure	0.3~0.99MPa
Proof pressure	1.5MPa
Unlocking pressure	0.3MPa or more
Ambient temperature	-5 to 80°C (No frozen)
Operating speed	50 to 1000mm/sec
Lubrication	No required (Note 1)
Locking force	Refer to the table below

Note 1 : If lubricating, additive-free turbine oil ISO VG 32 or VG 46 is recommended.

Dimension and Locking force



Model	Symbol	A	B	FA	FB	FC	FD	FE	FG	FJ	G	H
MRCB- 40		48	65	65	35	90	110	10	10	0	47	74
MRCB- 50		55	70	70	45	90	115	10	10	2	55	90
MRCB- 63		63	80	80	60	112	135	12	10	2	55	104
MRCB- 80		76	96	96	71	132	160	15	14	0	60	121
MRCB-100		92	116	116	85	150	180	15	14	0	65	144
MRCB-125		114	140	140	100	190	230	19	14	1	80	180
Model	Symbol	J	K	L	N	P	Q	U	V	Locking force (N)		
MRCB- 40		1/4	94	16	10	94	M8 × 1.25	10	13	942		
MRCB- 50		1/4	110	20	12	112	M8 × 1.25	10	13	1472		
MRCB- 63		1/4	124	20	13	126	M8 × 1.25	12	13	2337		
MRCB- 80		3/8	149	25	14	149	M12 × 1.75	15	17	3770		
MRCB-100		3/8	172	30	14	172	M12 × 1.75	15	17	5890		
MRCB-125		3/8	208	35	14	209	M12 × 1.75	15	17	9203		



HIROTAKA MFG. CO.,LTD.

HEAD OFFICE 5-89, Ikoma-cho, Kita-ku, Nagoya City, Aichi 462-0832, JAPAN

Phone +81-52-991-6111 Fax +81-52-991-6115

●LINE UP●

PNEUMATIC POWER CYLINDER

PNEUMATIC BOOSTER

POWER PACK CYLINDER

RUSH BOOSTER

HYDRAULIC CYLINDER

FREE LOCK PAD

SELLOCK CYLINDER

FLOATING CONNECTOR

AUTO CLAMPER

SEL NUT

LINEA BRAKE

PNEUMATIC AND HYDRAULIC

EQUIPMENT