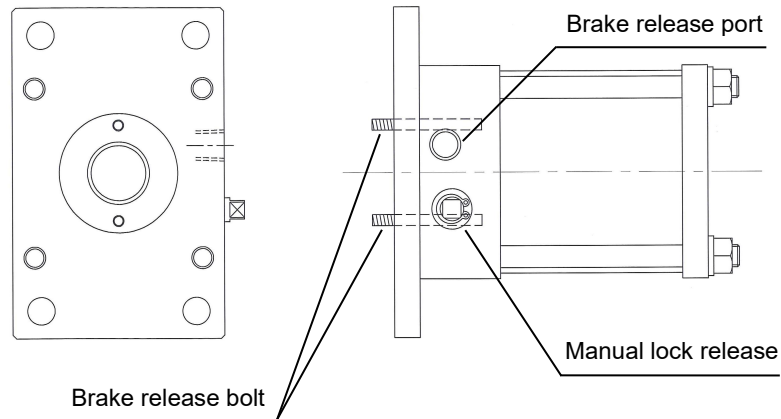


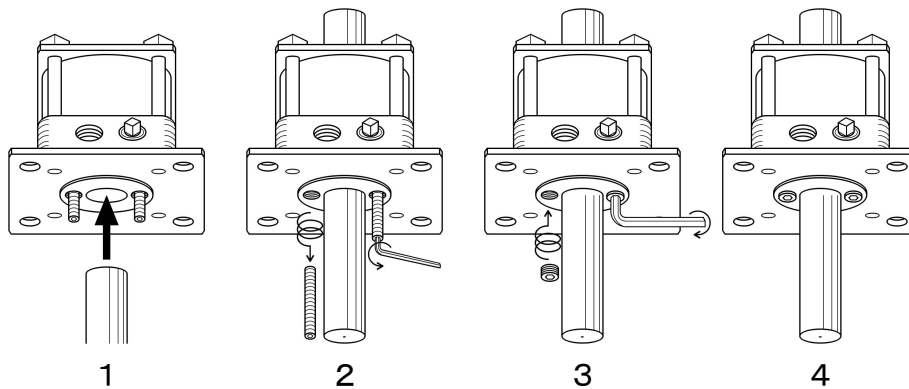
MANUAL

LINEAR BRAKE (MRCB)

The state of the shipment is like a illustration. The rod is not attached.



The brakes are shipped in a state of the release. Take off brake release bolt (2 bolts) after the insertion with a rod, and attach an attached plug (reference to bellow).



Size of plug

Model	Size
MRCB — 40	R 1/16
MRCB — 50	R 1/16
MRCB — 63	R 1/16
MRCB — 80	R 1/16
MRCB — 100	R 1/16
MRCB — 125	R 1/8



CAUTION

Never pull brake release bolt when do not insert a rod.
Because brakes metal shrinks, brake do not release.



HIROTAKA MFG. CO., LTD.

HEAD OFFICE 5-89, Ikoma-cho, Kita-ku, Nagoya City, Aichi 462-0832, Japan

Phone +81-52-991-6111 Fax +81-52-991-6115

BRANCH OFFICE 207 Castle-Shinkoiwa, 1-56-14, Shinkoiwa, Katsushika-ku, Tokyo 124-0024, Japan

Phone +81-3-3651-4230 Fax +81-3-3651-4231

<http://www.hirotaka.co.jp/eng>

2023a1