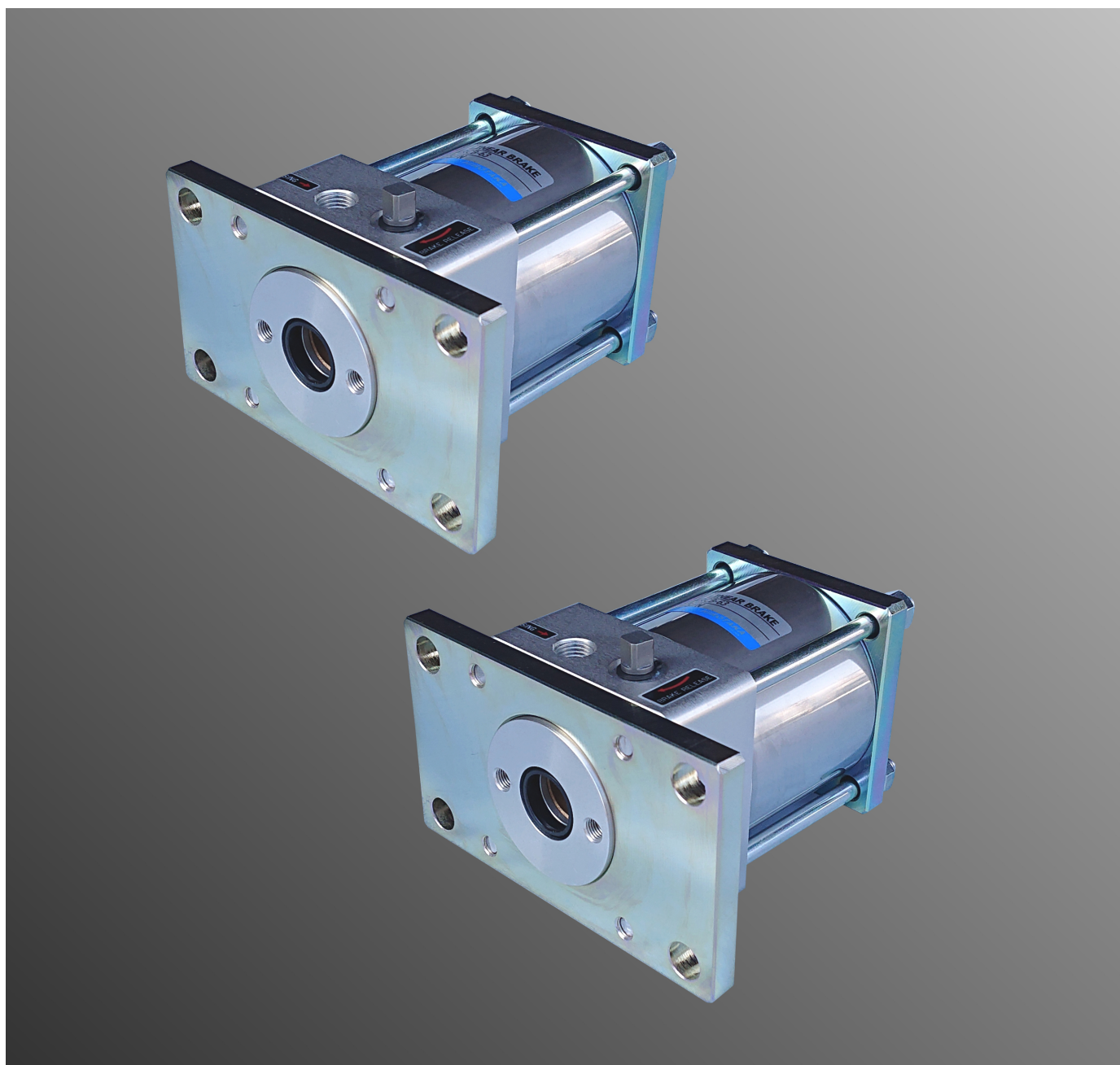


Mechanical lock type brake for linear shaft

## **LINEAR BRAKE**

Reliable control of intermediate stops, emergency stops, drop prevention, and positioning.



Can be easily retrofitted to existing equipment.  
Braking force is 900 to 9200N.  
Space saving with simple design.

## Overview

Space-saving mechanical lock unit that utilizes the braking performance of an air cylinder with brake. (Sellock cylinder).

The brake releases when compressed air is supplied and the brake locks when the compressed air is exhausted.

It is used for transported equipment, self-weight drop prevention, intermediate stop holding, etc.

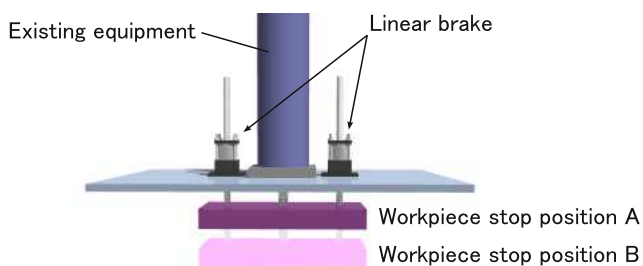
It can also be used as a safety device because it locks when the air pressure supply is interrupted.

## Feature

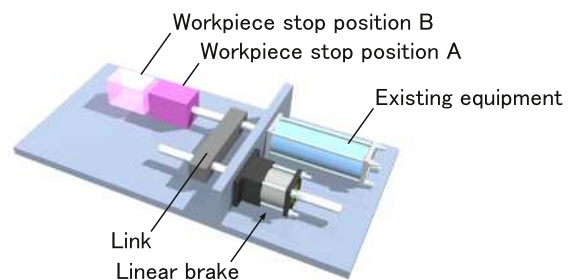
- 1 Mounting position is free. It can be installed in a position away from drive equipment such as cylinders. Installation is easy with a guide shaft that synchronizes with the drive unit.
- 2 Both the brake mechanism and the brake metal have a long service life and excellent reliability.
- 3 Manual release lever is standard equipment.
- 4 Stopping accuracy is  $\pm 1\text{mm}$ . (Theoretical value at 300mm/sec)
- 5 Space saving due to slim body.

### Example of installation

#### Vertical installation



#### Horizontal installation



# MRCB - 63

Series
Linea brake

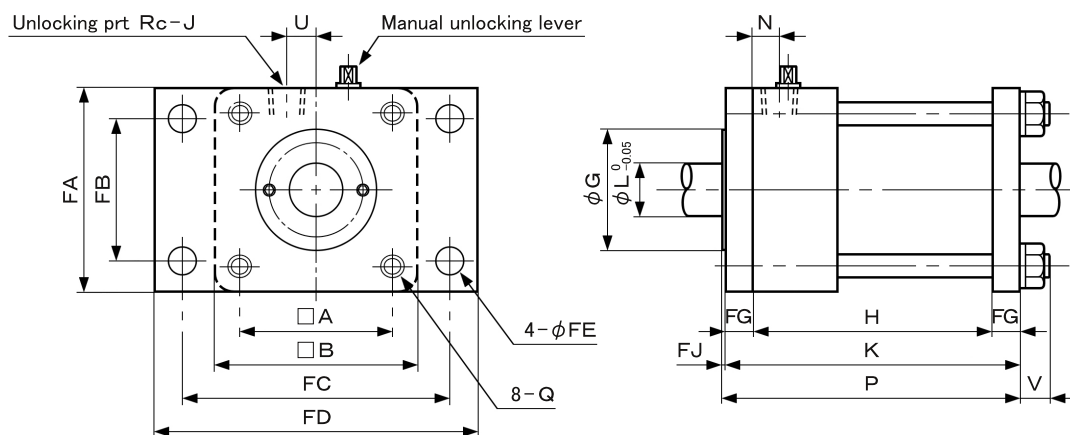
Symbol	Bore size
40	40 mm
50	50 mm
63	63 mm
80	80 mm
100	100 mm
125	125 mm

## Specification

Fluid	Air
Operating pressure	0.3~0.99 MPa
Proof pressure	1.5 MPa
Unlocking pressure	0.3 MPa or more
Ambient temperature	-5 to 80°C (No frozen)
Operating speed	50 to 1000mm/sec
Lubrication	No required (Note 1)
Locking force	Refer to the table below

Note 1 : If lubricating, additive-free turbine oil ISO VG32 or VG46 is recommended.

## Dimention, Locking force



Model No.	Symbol	A	B	FA	FB	FC	FD	FE	FG	FJ	G	H
MRCB- 40		48	65	65	35	90	110	10	10	0	47	74
MRCB- 50		55	70	70	45	90	115	10	10	2	55	90
MRCB- 63		63	80	80	60	112	135	12	10	2	55	104
MRCB- 80		76	96	96	71	132	160	15	14	0	60	121
MRCB-100		92	116	116	85	150	180	15	14	0	65	144
MRCB-125		114	140	140	100	190	230	19	14	1	80	180
Model No.	Symbol	J	K	L	N	P	Q	U	V	Locking force (N)		
MRCB- 40		1/4	94	16	10	94	M8 × 1.25	10	13	942		
MRCB- 50		1/4	110	20	12	112	M8 × 1.25	10	13	1472		
MRCB- 63		1/4	124	20	13	126	M8 × 1.25	12	13	2337		
MRCB- 80		3/8	149	25	14	149	M12 × 1.75	15	17	3770		
MRCB-100		3/8	172	30	14	172	M12 × 1.75	15	17	5890		
MRCB-125		3/8	208	35	14	209	M12 × 1.75	15	17	9203		



**HIROTAKA MFG. CO., LTD.**

HEAD OFFICE 5-89, Ikoma-cho, Kita-ku, Nagoya City, Aichi 462-0832, JAPAN

BRANCH OFFICE 207 Castle-Shinkoiwa, 1-56-14, Shinkoiwa, Katsushika-ku, Tokyo 124-0024, JAPAN

Phone +81-52-991-6111 Fax +81-52-991-6115

Phone +81-3-3651-4230 Fax +81-3-3651-4231

●LINE UP●

**PNEUMATIC POWER CYLINDER**

**PNEUMATIC BOOSTER**

**POWER PACK CYLINDER**

**RUSH BOOSTER**

**HYDRAULIC CYLINDER**

**FREE LOCK PAD**

**SELLOCK CYLINDER**

**FLOATING CONNECTOR**

**AUTO CLAMPER**

**SEL NUT**

**LINEA BRAKE**

**PNEUMATIC AND HYDRAULIC  
EQUIPMENT**